

**SWAN LAKE FIRST NATION – MATRIX SOLUTIONS
INC. PARTNERSHIP**

INDIGENOUS CONSTRUCTION MONITORING

WEEKLY REPORT

SPREAD 7

OCTOBER 9TH TO OCTOBER 13TH

1. PURPOSE OF THIS REPORT

The report is a weekly summary of the daily reports submitted by the Indigenous Construction Monitors that are working on spread seven. The social and cultural findings have been tabulated with locations and mitigation measures below. A summary of the construction activities has been summarized for the weeks of October 9th to October 13th, 2018.

Social and Cultural Features

Field Observation	# of occurrences	Description and Mitigation Measures	Mitigation Status	Further Action Required (Yes/No)
Traditional Use Area (hunting, fishing, gathering, trapping)	1	Traditional Land Use : Heritage Sites 3 HER-161/HER-186/HER-195.	Cultural Monitors and Biologist to be on site when working in these areas	
Rock Formations (rocks of significance, tipi rings, etc.)	N/A			
Artifacts	N/A			
Bones	N/A			
Potential Gravesites	N/A			

Environmental Features

Field Observation	# of occurrences	Description and Mitigation Measures	Mitigation Status	Further Action Required (Yes/No)
Medicinal or Cultural Plants	2	Cyperus schweinitzii S2 Sand Bluestem SSKP 844+630 VG-80. Crystalwort there is an abundance of approximately 270,000 individuals in a 30 m x 30 m area.	Working around plant and its ongoing Our construction will mitigate and work around area not through it.	

Aquatic Life	N/A			
Animal Observations or Burrows	N/A			
Bird Nests	N/A			
Trees (Red Willow)	N/A			
Wetlands	26	MB-1039- Class 4. Wetlands semi-permanent marsh wetland complex. MB-076 Seasonal Marsh Class 3 SSKP 852+370 MB-077 Semi-Permanent Marsh Class 4 Wetland Complex SSKP 852+460 MB-078 Ephemeral/Temporary Marsh Class 1&2 SSKP 853+700 MB-079 Seasonal Marsh Class 3 SSKP 853+940 MB-080 Seasonal Marsh Class 3 Wetland Complex SSKP 854+260 MB-081 Broad-Leaf Treed Swamp Wetland Complex SSKP 854+650 MB-082 Broad-Leaf Treed swamp Wetland Complex SSKP 855+150 MB-050 Semi-Permanent Marsh Class 4 Wetland Complex SSKP 838+120		

		<p>-MB-051 Ephemeral/Temporary Marsh Class 1 & 2 SSKP 838+710</p> <p>-MB-052 Seasonal Marsh Class 3 SSKP 838+830</p> <p>-MB-053 Ephemeral/Temporary Marsh Class 1 & 2 SSKP 838+970</p> <p>-MB-054 Semi-Permanent Marsh Class 4 Wetland Complex SSKP 841+480 Work in all wetlands ongoing throughout the project.</p> <p>MB-103 Seasonal Marsh Class 3 SSKP 885+030</p> <p>-MB-104 Seasonal Marsh Class 3 SSKP 885+250</p> <p>-MB-105 Ephemeral/Temporary Marsh Class 1 & 2 SSKP 885+530</p> <p>-MB-106 Seasonal Marsh Class 3 SSKP 885+650</p> <p>-MB-107 Seasonal Marsh Class 3 SSKP 885+890</p> <p>-MB-109 Ephemeral/Temporary Marsh Class 1 & 2 SSKP 886+060</p>		
--	--	-----------------------------------------------------------------------------------------------------------------------------------------------------------------------------------------------------------------------------------------------------------------------------------------------------------------------------------------------------------------------------------------------------------------------------------------------------------------------------------------------------------------------------------------------------------------------------------------------------------------------------------------------------------------------------------------------------------------------------------------------------------------------------	--	--

		<p>Wet lands seasonal marsh class 3. MB 1037. KP-815+300. UTM 364295 E 5513063 N. -MB-1039 Semi-Permanent Marsh Class 4 Wetland Complex SSKP 818+200 Tie-in crew lowering in sections -MB-078 Ephemeral/Temporary Marsh Class 1 & 2 SSKP 853+700 Poor Boy welding working in wetlands -MB-079 Seasonal Marsh Class 3 SSKP 853+940 Poor Boy welding working in wetlands -MB-080 Seasonal Marsh Class 3 Wetland Complex SSKP 854+260 Main gang welding in wetland -MB-081 Broad-Leaf Treed Swamp wetland Complex SSKP 854+650 Main gang welding working in wetland -MB-110 Semi-Permanent Marsh Class 4 Wetland Complex SSKP 886+260 Access & Fencing crews working through wetland</p>		
--	--	------------------------------------------------------------------------------------------------------------------------------------------------------------------------------------------------------------------------------------------------------------------------------------------------------------------------------------------------------------------------------------------------------------------------------------------------------------------------------------------------------------------------------------------------------------------------------------------------------------------------------------------------------------------------------------------------------------------------------------------------------------------------------------------	--	--

Watercourse Crossing	1	Black Creek SSKP 899+860	Done bore through Black Creek still work in area	
Watercourse Crossing	1	Souris River SSKP 907+833	Bridge made for road crossing for pipe. Pipe needs to be tested and coated next.	

Additional Observations and Summary of Activities or Concerns

Weekly activity included attending daily tailgate meetings and continue to check access points on the ROW and monitor Spread 7.

October 9, 2018 -Safety included: Use of vehicles or mobile equipment: Following rules & regulations, spotter if required. Housekeeping: area free of debris, material, tripping hazards. Focused on job at hand: eyes and mind on the task you are doing.

All injuries, incidents, and occupational illnesses can be prevented. All operating exposures can be controlled. Be aware of students and children in Brandon area and gravel roads as school is in season. Dress in layers cold weather season here and drink plenty of water as dehydration can happen when cold out. Muddy conditions and snow be aware of surroundings on foot and when driving.

Weather forecast/Environment: Cloudy. Risk of freezing drizzle in the morning. High 4. UV index 3.

General: attended tailgate meeting. The ROW and gravel roads dried up and snow melted making it easier for driving conditions and walking on the ROW. There's still areas that are really muddy and us monitors need to be careful. The areas we would access today would be split. I would go east and the junior monitors would go west as work is now all over ROW from start to finish. SSKP 899+860 Black Creek HDD is complete. The pipe is in the ground and the Crews did great. The Somerville HDD site on west side of Black Creek has been taken down and they have mobilized out of area. Just some clean up will be done at site and is currently under way. There still will be work in the coming weeks around the area and will be monitored. SSKP 907+833 The Souris River HDD section is very busy and congested. There was Excavators, Side Booms, Trucks, Welders and Workers around the area at Rd # 64. The welders were welding two different welds at the same time on section and the Side Booms were supporting pipe while they welded. The excavator was touching up the ramp and areas on ROW as well as road crossing. The bridge is in place and the pipe is under it as the section is over 700 m. Next, they will weld test heads and test the section. Also coat and pre-jeep the pipe as well. If everything goes to plan the testing will be done on October 15th, Monday. SF # 4 Bone yard. Excavator trenching east side of SF # 4. Very muddy, slippery. Welders welding the tie-ins through the bone yard at KP-813+200. Checked the generator for leaks, spills. No concerns. SF # 12 Fencers putting up posts in the wet lands and fencing it off so the farmer can put her cattle back in the pasture. SF # 15 Very muddy, Main line crew coating the bore section and tie-in section at KP-822+000. SF # 28 Side boom towing the work bus as its moving along with the poor boy shacks down the line. Prep crew working east of SF # 28 and SF # 29 at KP- 846+500. Bull moose spotted off the right away east side of SF # 28 by a dozer operator, off the buffer zone.

Work Forecast: Monitor down the ROW always. Monitor sensitive areas and avoid muddy conditions on ROW.

October 10, 2018 - Safety included: Use of vehicles or mobile equipment: Following rules & regulations, spotter if required. Housekeeping: area free of debris, material, tripping hazards. Focused on job at hand: eyes and mind on the task you are doing.

Slips, slippery (water, ice, snow, powders, granular solids) Trips, uneven walking surface, exposed or loose cables, wires or cords. All injuries, incidents, and occupational illnesses can be prevented. All operating exposures can be controlled. All employees are responsible for safety. Be aware of students and children in Brandon area and gravel roads as school is in season. Dress in layers cold weather season here and drink plenty of water as dehydration can happen when cold out. Muddy conditions and snow be aware of surroundings on foot and when driving.

Weather forecast/Environment: Cloudy. 30 percent chance of flurries late in the day.

Wind north 30 km/h. High plus 1. UV index 1

Keep all areas of work clean and gravel roads travelled as well. Minimize the number of environmental non-compliances. Provides Environmental Due diligence. Increase and strengthen the communication links between Contractors and Enbridge Construction and Environmental staff regarding environmental considerations and mitigation.

Provide daily on the job awareness/education through assessment and communication of the environmental considerations and mitigation.

General:

After our morning meeting the juniors would go monitor Rd # 28 as it's a sensitive area with lots of work going on. The senior would start from beginning to end of the line as there is lots of work being done. SSKP 816+200 holes in drainage lines going into field needs to be fixed as its spraying unfiltered water from ROW trench onto field. I let the Tie in foreman for Banister know immediately and politely as well as Environmental Inspector for Enbridge so its dealt with ASAP. SSKP 817+800 Sandblasting in bell hole inside trench box, preparing pipe to be coated. With the hydro vac crew standing by to help drain the water that's going into trench. We now have a Wetlands crew and they were in background of picture below stripping and trenching wetland crossings from Rd # 8. SSKP 852+370 to 856+100. Stringing crew has strung out pipe through wetlands MB-076/077/078/079/080/081/082. SSKP 907+000 Souris River HDD site has punched through with drilling and the next step is to attach 42" reamer than the pull. The test heads are welded on the Souris River HDD section as well. They will fill pipe on Friday and Saturday and test on Monday October 15th. SF # 28 Prep crew working east of SF # 28 at KP-847+000. Poor boy crew are east of SF # 28 at 844+000. The main gang welders are east of SF # 28 at KP-845+100. Walked the right away to the rare plant in the wetlands (cyperus schweinitzii) S2. SF # 6 Ditch wheel trenching the line for the pipe. South side of SF # 6. 3 Excavators pushing the top soil aside so that it does not fall back into the line that the ditch wheel is stripping at SF # 6.

Deficiencies

No stop signs at Rd # 31 crossing

Approximately 1.2 km east of intersection 44N and 123W an All Vehicles Stop sign is knocked down by railway tracks.

Work Forecast: Continue to monitor sensitive and priority areas on ROW.

October 11, 2018 - Safety included: Slips, trips falls. Watch the terrain where you are walking, pick-up any debris that is laying on the ground. Weather. Get your weather forecast for the day. Wear the proper P.P.E, Helmet, gloves, ear plugs, safety glasses, boots. All injuries, incidents, and occupational illnesses can be prevented. All operating

exposures can be controlled. Be aware of students and children in Brandon area and gravel roads as school is in season. Dress in layers cold weather season here and drink plenty of water as dehydration can happen when cold out. Muddy conditions and snow be aware of surroundings on foot and when driving.

Weather forecast/Environment: A mix of sun and cloud. Wind becoming northwest 20 km/h late in afternoon. High plus 3. Wind chill minus 13 in the morning. UV index 3 or moderate. Keep all areas of work clean and gravel roads traveled as well. Minimize the number of environmental non-compliances. Provides Environmental Due diligence. Increase and strengthen the communication links between Contractors and Enbridge Construction and Environmental staff regarding environmental considerations and mitigation. Provide daily on the job awareness/education through assessment and communication of the environmental considerations and mitigation.

General:

After our morning meeting the juniors and senior monitor would go assess the Trenching and Lower in crew that were moving from Rd # 7 to Rd # 12 as the area in between is to wet for Ditcher. The wetland crew will do it by Excavators.

At Rd # 8 around SSKP 818+100 The Ditcher was going slowly down ROW through a narrow area that had soil and pipe to close together for the Ditcher to make it through (picture below) great job by the foreman for stopping Ditcher and getting him to go back so they could properly widen the access more. Also the Wetland crew moved to Rd # 8 to start stripping and trenching wetland crossings. In this area I also observed welders between Rd # 7 & 8. SSKP 840+419 In TLU-66 a Traditional Land use area there is hunting 225 m south of the project during hunting season. Also in the area spread across more than 2 km's is the Grade crew working throughout 5 wetlands in close proximity to each other the wetlands were MB-050/051/052/053/054 from SSKP 838+000 to SSKP 840+419. They are also installing wetland ramps. SSKP 907+600 & 908+250 The Souris River HDD section has both test heads welded and rigged up for test. They will start filling tomorrow and be done on Saturday. Than test on Monday October 15th. After test is completed they will coat and pre-jeep the section.

Also I've seen the junior monitors picking up garbage as well. I'm going to get them both a \$20 Tim's card for the great job they've been doing as they both love their morning coffees! SF # 7 Excavator trenching at the entrance of SF # 7. Fencers installing containment pig pen. Laying the filter cloth down. Spoke to the fencers was told that it was approved by environmental. No concerns. SF # 12, 5 side booms waiting for trenching to be done. 3-Excavators moving the sand away from trenching strip.

SF# 26 Open ditch 3/4 full of water. No activity. Walked up the SF checked for garbage, any sort of spills gas or oil. Cigarette butts. SF # 30 Walked up the right away. cigarette butt on the ground near the pipe. Bevelling clean up crew were picking up shavings.

Deficiencies

Rd # 32 has no stop signs installed by road crossing.

Yesterday I reported a All Vehicles Stop sign was knocked down approximately 1.2 km east of intersection 44N+123W. Today in same area west across the tracks of 1st sign knocked down, the other one has been knocked down. most likely clipped by farming equipment. At Rd # 42 both stop signs are knocked down by road crossings. Also I've been picking up lots of different garbage on the ROW and on gravel roads. Some of the common things I pick up are gloves. Also I've picked up bungee cords, geo tech, rope

from pipe used in stockpile yards, zip ties, orange flagging tape and empty water bottles.

Work Forecast: Monitor sensitive areas coordinate areas with Banister daily objectives sheet.

October 12, 2018 - Safety included: Muddy sites, Slips, trips, falls. Wear the proper footwear. Watch out for pot holes, gopher holes, skids, garbage. Heavy equipment, keep eye contact with operator at all times. Wear proper P.P.E. Weather dress for the season not the day. Communication, let your co-workers know where you are going and when you will be back. All injuries, incidents, and occupational illnesses can be prevented. All operating exposures can be controlled. As a Senior Monitor I'm accountable for safety performance. All employees are responsible for safety. Safety is 24/7 and it benefits family, friends, co-workers and community.

Be aware of students and children in Brandon area and gravel roads as school is in season. Dress in layers cold weather season here and drink plenty of water as dehydration can happen when cold out. Muddy conditions and snow be aware of surroundings on foot and when driving.

Weather forecast/Environment:

Today Sunny. Increasing Cloudiness late this afternoon. Wind becoming southwest 20 km/h gusting to 40 near noon. High 7. UV index 4 or moderate. Keep all areas of work clean and gravel roads travelled as well. Minimize the number of environmental non-compliances. Provides Environmental Due diligence.

Increase and strengthen the communication links between Contractors and Enbridge Construction and Environmental staff regarding environmental considerations and mitigation. Provide daily on the job awareness/education through assessment and communication of the environmental considerations and mitigation.

General:

After morning meeting with monitors we would plan our work off of Banister's daily objective list and look for most sensitive areas work is being done in. Were more spread out as we have an area of over 100 km's to cover and the largest section for Enbridge in Manitoba.

After I left the office I went to wash and disinfect the truck as I was going into an area that has only been partially stripped.

SSKP 885+020 Arrived at Rd # 51 and met with the Cultural monitors and biologist that were assessing the Traditional Land Use area in Heritage sites HER-161/HER-186/HER-195. Also in same areas there was 6 different wetlands that were being worked on by Access crew installing wetland ramps. I spent most of the day here as it was full of sensitive areas including a Rare plant called Crystalwort that was located in the wetlands. It was clearly identified and the Access crew worked away from it and not disturbing them. I've watched this crew before by Rd # 8 over a month ago installing wetland ramps in wetlands. At the time there was a lot of green hands that haven't done this before. Today you could see the improvement as they were a lot more efficient and productive. They also had great communication with the operators. Good job for the Access crew was good to see the improvement. I also talked with the Environmental Coordinator for Enbridge and he mentioned to me there was a spill not far from where we were at Rd # 49. After our talk late in afternoon I headed there.

SSKP 882+080 I arrived at Rd # 49 and just to the west about 15 m that area of the spill had already been contained. The area was flagged off and identified. Apparently a Grader leaked diesel onto the ground into the soil. It was reported and dealt with immediately. SF # 49 Excavator at the spill scooping up the contaminated soil which is in well contained bags ,moving them onto poly. Workers are flagging off the site where the spill happen. They will restripe the area than environmental will test the area to make sure there is no contamination left in the area. All the proper procedures were taken in handling the area. SF # 29 D-8 Dozer was at the entrance of SF# 29 south side KP-850+895.1 was backing up when his fire extinguisher fell off the dozer, onto his tracks and down onto the ground when he proceeded to back up onto the fire extinguisher. Flatten the extinguisher, powder on ground. excavator picked it up and placed it onto a black blanket, workers pick-up the remaining powder with shovels. The powder and sand that was placed on the blanket was well contained.

SF # 30 Prep crew workers are at the wetlands bevelling the pipe. the clean-up crew were picking up shavings after the prep crew. Very clean and tidy under the pipes. No concerns.

Work Forecast: Continue to monitor sensitive areas and work together to spread out across project.

October 13, 2018 - Safety included: Slips, trips, falls. Watch the terrain where you are walking, pick-up any debris that is laying on the ground. Weather. Get your weather forecast for the day. Wear the proper P.P.E, Helmet, gloves, ear plugs, safety glasses, boots. Housekeeping, keep company vehicle clean at all times windows brake lights head lights. Lifting/handling lift with the knees not your back. All injuries, incidents, and occupational illnesses can be prevented. All operating exposures can be controlled.

As a Senior Monitor I'm accountable for safety performance. All employees are responsible for safety. Safety is 24/7 and it benefits family, friends, co-workers and community. Be aware of students and children in Brandon area and gravel roads as school is in season. Dress in layers cold weather season here and drink plenty of water as dehydration can happen when cold out. Muddy conditions and snow be aware of surroundings on foot and when driving. Also, high winds today be careful around crews for dust contamination/coating fumes/welders fumes and also when opening doors vehicles/office doors/bathroom doors.

Weather forecast/Environment: Rain (snow) ending in the morning then mainly cloudy with 30 percent chance of flurries. Wind northwest 50 km/h gusting to 70. High plus 3. UV index 2 or low. Keep all areas of work clean and gravel roads travelled as well.

Minimize the number of environmental non-compliances. Provides Environmental Due diligence. Increase and strengthen the communication links between Contractors and Enbridge Construction and Environmental staff regarding environmental considerations and mitigation. Provide daily on the job awareness/education through assessment and communication of the environmental considerations and mitigation.

General:

After morning meeting, we would go to monitor more sensitive areas where work activities are taking place. SSKP 818+200 The Tie-in crew was working in MB-1039 Semi-Permanent Marsh Class 4 Wetland Complex. The Side booms had a 7 joint section in their cradles preparing to lower pipe into trench and start the tie in.

SSKP 822+025 The Trenching crew was digging ditch with dry soil conditions and Lowering in was setting up cradles on pipe to prepare to lower into trench.

SSKP 827+700 The Buffer Mulch crew was mowing the buffer and rolling the top soil. They also prepped the mulch spread heading east of Rd # 21. They had to stop and get filter cloth for the pipe as there was strong winds that were blowing the mulch on the pipe. It was noticed right a way and was corrected than they continued on.

Between Rd # 32 & 33 Main gang & Poor Boy Welding crews were working through wetlands. MB-78/79/80/81. SSKP 886+000 Access crew was installing wetland ramps and they were working around fencing crews as they were installing perimeter fences. They were starting work around wetland MB-110 Semi-Permanent Marsh Class 4 Wetland Complex. SF # 4 bone yard. Parked excavator in the wetlands. Checked for oil, leaks. No issues. SF # 6 5-excavators trenching in the wetlands. Workers pulling the frozen hoses out of the pig pen. SF # 7 Checked generators and lighting plants both well contained.

Deficiencies

Rd# 32 Crossing needs to be paved as it is in rough shape from heavy equipment.

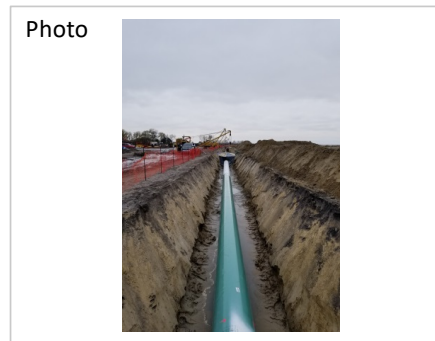
Work Forecast: Continue to monitor sensitive areas doing a marvelous job in the process.

Photos of Sites Visited & Topics Discussed This Week

October 9, 2018



Description & Location KP- 820-000
Photo taken facing east.
Fencers putting up the fence.
MB 1139-5 class 4. Wetlands semi marsh complex



Description & Location KP-814+800
Photo taken facing west.
Welders are welding the tie-ins.



Description & Location: SSKP 907+833
Souris River HDD section
Welders finishing up weld
Side Booms holding pipe in place
Facing northwest



Description & Location: SSKP 907+833
Souris River HDD section
Welders finishing last weld for section
Side Booms holding pipe
Photo facing northeast

Lat / Long (SW) 4-23-7-17-W1 UTM/E
49.579713 281 m North 17 m East 5492131 m
99.688597 Bearing: 327° (TN) GPS: ±5 m 450222 m
Elev: 400 m October 9, 2018 14:30:05 CM: -99



Description & Location: SSKP 907+833
Souris River HDD section
Bridge complete pipe resting under bridge
Very congested area stayed out of way
Photo facing northwest

Lat / Long (SW) 6-25-7-18-W1 UTM/E
49.597315 620 m North 477 m East 5494164 m
-99.795855 Bearing: 13° (TN) GPS: ±5 m 442489 m
Elev: 412 m October 9, 2018 14:42:10 CM: -99



Description & Location: SSKP 899+860
Black Creek HDD section
Pipe from bore sticking out of ground
East of Black Creek
Photo facing north

October 10, 2018

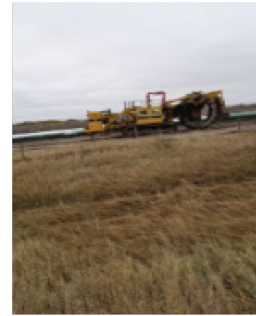
Phot



Description & Location KP-844.63 + 844.72

Photo taken facing south.
Rare plant. *Cyperus schweinitzii* S2
VG-80

Photo



Description & Location KP- 817+741.1 51N

Photo taken facing east.
Ditch wheel trenching south side of SF#6

Photo



Description & Location: SSKP 816+200

Drainage water lines
Pumping water out of Ditch into pigpen
Holes in line spraying field
Facing northwest



Description & Location: SSKP 817+800

Congested work area
Coating, Hydro vac, Booms and
Excavators. Trench box for unstable
trench walls Facing east

Lat / Long (NE) 10-22-8-22-W1 UTM N/E
49.674876 622 m South 582 m West 5503397 m
00.379852 Bearing: 291° (TN) GPS: ±5 m 400446 m
Elev: 430 m October 10, 2018 13:04:38 CM: -99



Description & Location: SSKP 856+100

Stringing Crew in Wetlands
MB-082 Broad-Leaf Swamp
Have been in wetlands past 3 days
Facing west

Lat / Long (SE) 7-22-7-17-W1 UTM N/E
49.583954 755 m North 754 m West 5492610 m
-99.699674 Bearing: 86° (TN) GPS: ±5 m 449425 m
Elev: 362 m October 10, 2018 14:17:18 CM: -99



Description & Location: SSKP 907+000

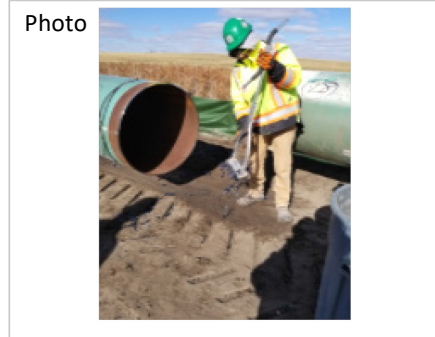
Souris River Somerville HDD
Operations for drilling
In process of attaching 42" reamer
Facing North

October 11, 2018



Description & Location: KP 836+409

Photo taken facing west.
Open ditch 3/4 of water



Description & Location: KP 851+560

Photo taken facing south.
Beveling crew cleaning up the shavings
with a magnet broom.



Description & Location: SSKP 818+100

Ditcher from Trenching crew
Was driving towards me
To narrow to make it through
Facing east



Description & Location: SSKP 868+875

On both sides of crossing
Stop signs knocked down
Also Rd # 31 and 32 no stop signs
Reported to Enbridge, facing west



Description & Location: SSKP 840+419

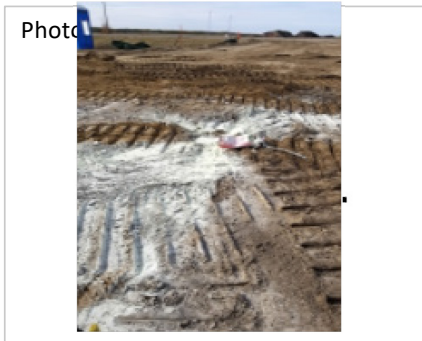
Grade crew stripping around wetlands
Workers setting up access wetlands ramp
In TLU-66 and several wetlands
Facing west



Description & Location: SSKP 907+600

Souris River HDD section test heads
Both test heads on west/east side
Section is now rigged up for test
Filling today and tomorrow

October 12, 2018



Description & Location : KP 850+895
Photo taken facing east.
Dozer backed onto the fire extinguisher at SF # 29



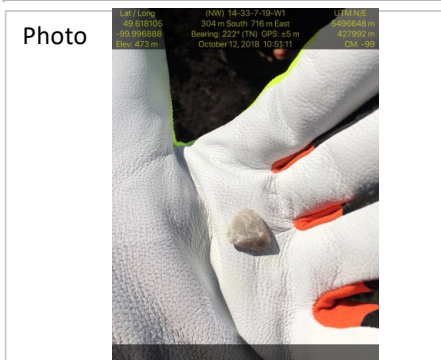
Description & Location : KP 882+099
Photo facing west.
Well contained contaminated soil.



Description & Location: SSKP 885+020
Heritage Resource area HER-161
Dozers working together stripping
Cultural monitors assessing area
Facing east



Description & Location: SSKP 885+250
Seasonal Marsh Class 3 MB-104
Installing wetland ramps
Cultural monitor to the left
Facing east



Description & Location: SSKP 885+130
Sun Stone rock
Found while with Monitor and Biologist
Many rocks found and some flakes
In Heritage area HER-186



Description & Location: HQ Banister yard
The monitors Tim's cards, for doing a great job
There good workers and was well deserved

October 13, 2018



Description & Location KP-815+300

Photo facing south
Excavator parked in the wetlands



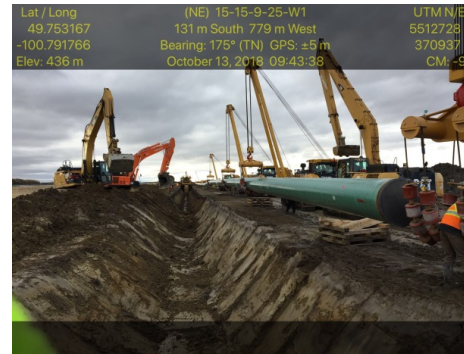
Description & Location KP-817+900

Photo taken facing north.
Generator & lighting plant well contained.
Checked for oil, leaks. No concerns



Description & Location: SSKP 818+200

Tie In crew
Getting prepared to low pipe into trench
Side Boom hold pipe while they weld in trench
Facing southwest



Description & Location: SSKP 822+025

Trenching & Lowering in crews
Dry soil conditions helped trenching
Excavators, Side Booms and Ditcher
Facing south



Description & Location: SSKP 827+700

Buffer Mulch Crew
Mulching the buffer
Strong wind conditions slowed work down
Facing Northeast



Description & Location: SSKP 886+260

Access & Fencing Crew
Building wetland ramps
Installing perimeter fence
Facing east

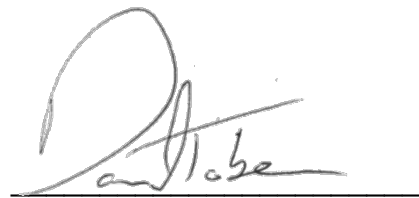
APPROVALS



Lee Bear
Senior Construction Monitor

November 22, 2018

Date



Daniel Tober
Senior Environmental Scientist

November 22, 2018

Date